



Aqua Performing a  
Danish Dance of Greeting

Waratah West Public School –  
Moving Forward Together

Leonora Parade, Waratah West, 2298

T 4968 1765 F 4960 1706 E [waratahwst-p.school@det.nsw.edu.au](mailto:waratahwst-p.school@det.nsw.edu.au)

Thursday, 14 March 2019

## Principal's Message

### Respect, Responsibility, Learning

Our current school-wide value focus is on **Responsibility**. Some key discussion points have been raised in classrooms and many students are demonstrating these every day.

Responsibility is:

- Doing my job and helping others to do theirs,
- Caring for others and for our school,
- Trying my best at all times,
- Moving safely and being in the right place at all times,
- Helping to make my school and the world a better place.

The Assembly Awards this week will acknowledge students who are consistently demonstrating the value of **Respect**.

### Fundraising

Many thanks to the family members who came along to this morning's meeting, and are assisting in planning and organising a number of Fundraising activities. Volunteers are always welcome and much appreciated.

### Election Day BBQ

Vote at Waratah West Public School on Saturday, 23<sup>rd</sup> March 2019. BBQ sausage sizzle, bacon & egg rolls and cold drinks will be available from 8am. Please encourage your neighbours to partake!

Volunteers are urgently needed to assist with the BBQ. Please contact the school if you are available.

### Easter Hat Parade and Raffle

Save the date for our Easter Hat Parade on Friday, 12<sup>th</sup> April at 2:15 pm. Donations for our Giant Easter Raffle can be left at the office. Many thanks for supporting this fundraising event.

### Student Survey

This term our school will again participate in the **Tell Them From Me** Student Feedback Survey. The survey measures factors that are known to affect academic achievement and other student outcomes. The focus of the NSW-wide survey is on student wellbeing, engagement and effective teaching practices. The survey is a great opportunity for our students to provide us with valuable and quick feedback on what they think about school life, how engaged they are at school and the different ways teachers interact with them. Capturing the voices of our students will help us to improve how we do things at school.

More information is available at  
<http://surveys.cese.nsw.gov.au>

### Harmony Day

At Waratah West PS we truly believe our diversity is our strength. We will celebrate Harmony Day on Thursday 21<sup>st</sup> March. Harmony Day will be celebrated on **Thursday 21<sup>st</sup> March**.

Years 3-6 students will attend University of Newcastle for Children's Uni Harmony Day activities.

K-2 students will participate in afternoon activities at school, celebrating the diverse range of cultures represented here at WWPS. K-2 families are welcome to join us from 1:15pm. K-2 students may come to school dressed in orange, or in the traditional clothing of their cultural background.



## Cross Country Carnival

Students will participate in the WWPS Cross Country Carnival on Friday 29<sup>th</sup> March, beginning at 9:30am. Spectators are welcome and we encourage you to come along and support your child. A sausage sizzle BBQ will be available on the day- a note with further details will be sent home closer to the date.

## ANZAC Day Service

Each year we hold a solemn service to remember and honour the sacrifice of Australians in wartime. Our school leaders will conduct the service, supported by members of the Waratah Mayfield Islington RSL Sub-Branch. It will be held on **Thursday 11<sup>th</sup> April at 9:30am** Please join us for this important occasion.

## Year 7 Expression of Interest

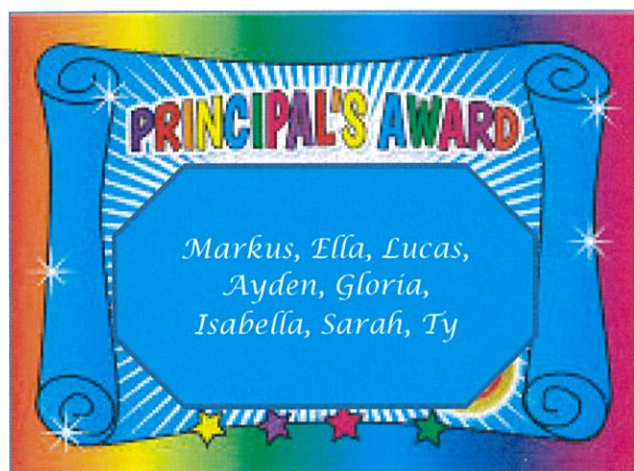
Year 6 students need to return their Year 7 Expression of Interest forms by Friday 15<sup>th</sup> March.

## Assembly Spotlight Class

**Tangerine** class will showcase at tomorrow's assembly. Please join us at 2:15pm under the COLA.

*Nicola Moroney, Principal.*

## Principal's Award



## CALENDAR - Term 1

### Week 7

Friday, 15<sup>th</sup> March      Assembly 2:15PM

### Week 8

Thursday, 21<sup>st</sup> March      Harmony Day  
Saturday, 23<sup>rd</sup> March      NSW State Election  
Day BBQ fundraiser.

### Week 9

Friday, 29<sup>th</sup> March      Cross Country  
Assembly 2:15PM

### Week 11

Thursday, 11<sup>th</sup> April      Anzac Service  
Friday, 12<sup>th</sup> April      Easter Hat

### End of Term 1

## Weekly Assembly Awards

Class	Respect	Super Star
AQUA	Lachlan Sage Ayden	Annie
TANGERINE	Cillian Ezziah Hamish	Kaysen
SILVER	Addison Ava Bailey	Savannah Estelle
PURPLE	Teddy Abbie PJ	Ty Coby





## Entertainment Book 2019-2020

The Entertainment Book 2019-2020 is coming soon! The cost is \$65 and the school receives 20% from every book sold – a great fundraiser for our school.

All books pre-ordered before April 4<sup>th</sup> will receive a selection of valuable Early Bird Offers, vouchers that can be used BEFORE the official launch of the book in April 2019.

For more information, or to pre-order a book, see Mrs Bunny at the school office (purchases can also be made online).

## \$2 Meal Deal – Meat Loaf and a Salad and Fruit Platter.

It's a retro classic and we make it from scratch with fresh ingredients. Our homemade meatloaf is made with lean beef mince, fresh vegetables, fragrant herbs and happy hen eggs. Our barbecue meatloaf with potato smash is sure to become a favourite. A fruit and salad platter will finish the meal.

There is also a tasty vegetarian or Halal option available (If required, please have note back Thursday, so Mrs Murdoch can cater).

The cost is \$2 per student. Please bring your own drink. Return your order note to the office by Friday morning.







**JON & Bailey**

## 2019 Student Requirements

Bookpacks are available for all students to use in their classroom. The bookpacks include a selection of exercise books, stationary items and for Years 1 to 6 a Wellbeing Journal.

The cost of the pack for Kindergarten students is \$15 and for Years 1 to 6 \$25 (the cost reflects the inclusion of the Journal and payment will be required before students can access them). We will no longer request a School Contribution of \$35 per year.

Please see Mrs Bunny in the office regarding payment.



## Headlice

Headlice are present in the hair of some students with the school.

Please check your child's hair for nits/lice tonight using the methods recommended in the letter sent home yesterday. If you find and eggs/lice please commence treatment as recommended.

## Library Bags

Thank you to Katrina Fowler and Helen Hobbs for donating to our school beautiful handmade library bags.



## Promoting Positive Home School Partnerships

At Waratah West Public School we actively encourage our parents, caregivers and community members to participate in school life. As educators we recognise and value the skills and abilities that adults can share with children and we acknowledge the positive impact that this involvement has on increasing the learning outcomes of our students. A focus in our 2018-2020 School Plan will be to increase family and community engagement with the school, and strengthen home-school partnerships.

We have had a positive start to achieving this goal, with family and community members supporting our students in a variety of ways in the first few weeks of 2018. Many thanks to those who assist with Breakfast Club, bottle collection, Meal Deal and in classrooms.

Schools are places where students, staff, parents and visitors need to feel safe and secure. Ensuring that our school remains a pleasant and safe place for all is the responsibility of all who enter the school grounds. Students' behaviour is guided by our Student Welfare Policy, Student Discipline in Government Schools Policy and the Behaviour Code for Students, and teachers follow a Code of Conduct mandated by the Department of Education.

<https://education.nsw.gov.au/policy-library/associated-documents/behaviourcode.pdf>

It is with this in mind that we remind families and community members of the procedures that need to be followed so that any issues that arise can be resolved with minimum disruption to student learning.



## HOW TO APPROACH YOUR SCHOOL

CONCERN	APPROPRIATE ACTION
The academic progress of own child	<ul style="list-style-type: none"><li>• Directly contact the child's teacher either by note, by phone or in person to arrange a suitable time to discuss any issues.</li></ul>
The wellbeing of own child	<ul style="list-style-type: none"><li>• For minor issues directly contact your child's teacher to clarify information.</li><li>• For more serious concerns, contact the School Administration Manager (Mrs Bunny) at the school office. State nature of concern and arrange a suitable time to talk with class teacher or appropriate staff member.</li><li>• To convey information about change of address, telephone number, emergency contact, custody details, health issues etc. please contact the office.</li></ul>
Actions of other students	<ul style="list-style-type: none"><li>• Contact the class teacher with a classroom concern or clarification.</li><li>• Contact the Assistant Principal (Ms Chapman) or Principal (Ms Moroney) for playground or other concerns or clarification</li></ul>
School policy or practice	<ul style="list-style-type: none"><li>• Contact the office. State nature of concern and make an appointment to see the principal and/or appropriate member of staff.</li></ul>
Actions of a staff member	<ul style="list-style-type: none"><li>• Contact the office and state concerns to the Principal.</li><li>• Arrange to meet directly with the Principal</li></ul>

**NB No parent is to directly approach another person's child. The school will deal with issues between students as part of our Discipline and Welfare Policy.**

**The School Community Charter outlines the responsibilities of parents, carers, educators and school staff in NSW public schools to ensure our learning environments are collaborative, supportive and cohesive.**

Our staff are committed to maintaining regular and respectful communication with families. You would be aware that in the afternoon, teachers are almost always available at the front of the school for an informal chat, and/or available for more formal meetings when necessary. **I respectfully request that you do not approach teachers on playground duty in the mornings with regard to issues, as the teacher's primary responsibility is to supervise and monitor the safety and wellbeing of all students.**

Behaviour in the presence of students, staff, parents or other visitors to the school in a manner that causes alarm or concern to the students, staff, parents or other visitors, is never acceptable. Respectful communication is expected at all times, including via telephone and email.

**At Waratah West Public School we have high expectations of mutual respect for all stakeholders. This will ensure a harmonious, nurturing and caring environment in which we can all grow and learn in partnership.**



# School Community Charter

 **Collaborative. Respectful. Communication.**

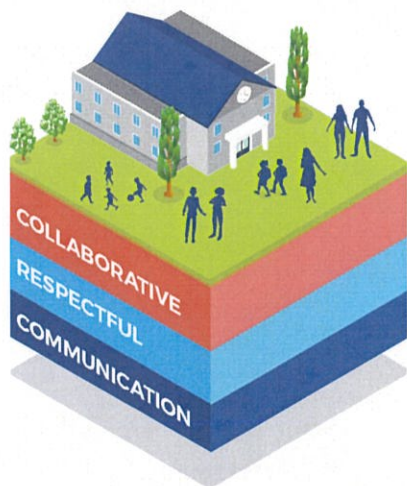
The following School Community Charter outlines the responsibilities of parents, carers, educators and school staff in NSW public schools to ensure our learning environments are collaborative, supportive and cohesive.

## What our schools provide

NSW public schools work to create positive environments for students, staff and the entire school community that support student learning. We strive to ensure that every student is known, valued and cared for.

**The best education happens when parents and schools work together.**

The School Community Charter aligns with the NSW Department of Education Strategic Plan 2018 – 2022.



## Positive environments

It is important that our NSW public schools are positive environments and that parents and carers are kept informed of students' progress and school announcements.

Parents and carers can expect:

- to be welcomed into our schools to work in partnership to promote student learning.
- communication from school staff will be timely, polite and informative.
- professional relationships with school staff are based on transparency, honesty and mutual respect.
- to be treated fairly. Tolerance and understanding are promoted as we respect diversity.

We treat each other with **respect**

We **prioritise the wellbeing** of all students and staff

**Unsafe behaviour** is not acceptable in our schools

We work **together** with the school

**Ensuring respectful learning environments for all members of NSW Public Schools communities.**





We create  
**collaborative**  
learning  
environments

We  
all play  
**a part**

We work  
**in partnership**  
to promote  
student  
learning

## Communicating with our schools

Our staff will find a time to talk to you when they can give you their full attention. Please remember that while our staff are in class or dealing with other matters, they may not be available to answer your questions immediately.

Our schools and communities will make sure that written communication is appropriate, fair and easy to read. We encourage you to use email and social media appropriately to connect with your school and stay up-to-date with up-coming events in the school community.

Our guide for parents, carers and students provides useful information about the complaints process: [education.nsw.gov.au/about-us/rights-and-accountability/complaints-compliments-and-suggestions/guide-for-parents-carers-and-students](https://education.nsw.gov.au/about-us/rights-and-accountability/complaints-compliments-and-suggestions/guide-for-parents-carers-and-students)

## Respectful communication is a right

In all workplaces people have the right to feel respected. Unacceptable and offensive behaviour has no place in our school communities.

To ensure the wellbeing of students, staff and the community in our schools, steps will be taken to address unacceptable behaviour. This may include restricting contact with the school community or, in more serious cases, referral to NSW Police.

## Unacceptable behaviour may include but is not limited to:

- Aggressive or intimidating actions, such as violence, threatening gestures or physical proximity.
- Aggressive or intimidating language, including the use of obscenities, making sexist, racist or derogatory comments or using a rude tone.
- Treating members of the school community differently due to aspects such as their religion or disability.
- Inappropriate and time wasting communication.



**Collaborative.**  
**Respectful.**  
**Communication.**

**School Community Charter**

[education.nsw.gov.au](https://education.nsw.gov.au)